



ACE1 Antibody

E300500

be determined by the end user.

Product description:

Formulation: Lyophilized anti-ACE1 antibody purified by peptide affinity column containing 2% BSA and 0.02% NaN₃
Catalog No.:E300500
Size: 100ug/200ul

Source:

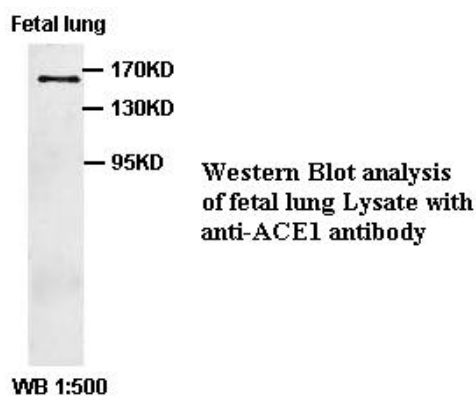
Rabbit polyclonal ACE1⁽¹⁾ antibody was raised against a peptide from N terminal residues of human ACE1 protein.

Species Reactivity:

Human
Not yet tested in other species.

Application:

For research use only
Peptide ELISA titer: 1:1,000-1:10,000
Western blot analysis: 1:200-1000
Optimal dilutions/concentrations should



Dilution instruction and storage:

Already reconstituted in 200ul sterile H₂O. The antibody is stable for at least one year when stored at -20°C after reconstitution.

Avoid repeated freeze/defrost cycles.

Reference:

(1) Tipnis,S.R., Hooper,N.M., Hyde,R., et al. A human homolog of angiotensin-converting enzyme.Cloning and functional expression as a captopril-insensitive carboxypeptidase. J. Biol. Chem. 275 (43), 33238-33243 (2000)

For Research Use Only