



## Annexin A1 Antibody

E300508

**Product description:**

Formulation: Lyophilized protein A  
Purified Annexin A1 Antibody  
containing 0.02% NaN<sub>3</sub>

Catalog No.: E300508

Size: 100ug/200ul

**Source:**

Rabbit polyclonal Annexin A1 <sup>(1)</sup>  
antibody was raised against a 15 amino  
acid peptide from the internal residues  
of human Annexin A1

**Species Reactivity:**

Human

Not yet tested in other species.

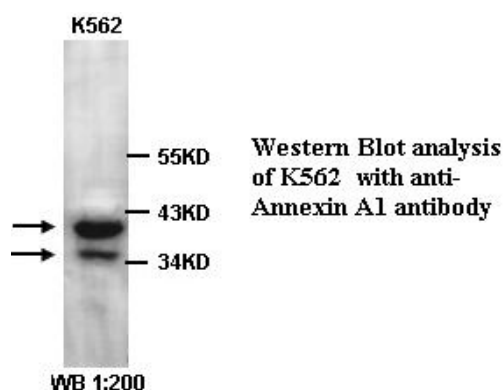
**Application:**

For research use only

Peptide ELISA titer: 1:10,000-1:40,000

Western blot analysis: 1:200-500

Optimal dilutions/concentrations should  
be determined by the end user.

**Dilution instruction and storage:**

Already reconstituted in 200ul sterile  
H<sub>2</sub>O. The antibody is stable for at least  
one year when stored at -20°C after  
reconstitution.

Avoid repeated freeze/thaw cycles.

**Reference:**

(1) Ando, Y., Imamura, S., Owada, M. K.  
Calcium-induced intracellular cross-linking of  
lipocortin I by tissue transglutaminase in  
A431 cells. Augmentation by membrane  
Phospholipids. J. Biol. Chem. 1991; 266 (2):  
1101-1108.

**For Research Use Only**