



AP1G1 Antibody

E300523

Product description:

Formulation: Lyophilized anti-AP1G1 antibody purified by peptide affinity column containing 2% BSA and 0.02% NaN_3

Catalog No.:E300523

Size: 100ug/200ul

Source:

Rabbit polyclonal AP1G1 ⁽¹⁾ antibody was raised against a peptide near the intermediate of human AP1G1 protein

Species Reactivity:

Human, mus, rat

Not yet tested in other species.

Application:

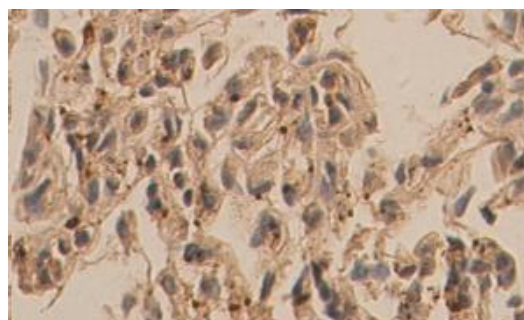
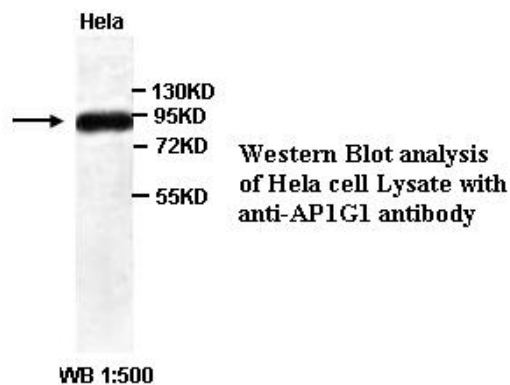
For research use only

Peptide ELISA titer: 1:1,000-1:10,000

Western blot analysis: 1:200-1,000

Immunohistochemistry: 1:100-500

Optimal dilutions/concentrations should be determined by the end user.



Immunohistochemical staining of formalin-fixed paraffin-embedded fetal lung showing cytoplasmic staining with anti-AP1G1 antibody at a dilution of 1/100.

Dilution instruction and storage:

Already reconstituted in 200ul sterile H_2O . The antibody is stable for at least one year when stored at -20°C after reconstitution.

Avoid repeated freeze/thaw cycles.

Reference:

(1) Chestkov, A.V., Baka, I.D., Kost, M.V., et al. The d4 gene family in the human genome. *Genomics* 36 (1), 174-177 (1996)

For Research Use Only