



APAF1 Antibody

E300541

Product description:

Formulation: Lyophilized anti-APAF1 antibody purified by peptide affinity column containing 2% BSA and 0.02% NaN₃

Catalog No.E300541

Size: 100ug

Antigen GeneBank No.: O14724

Source:

Rabbit polyclonal APAF1 ⁽¹⁾ antibody was raised against a peptide from N terminal residues of human APAF1 protein.

Species Reactivity:

Human

Not yet tested in other species.

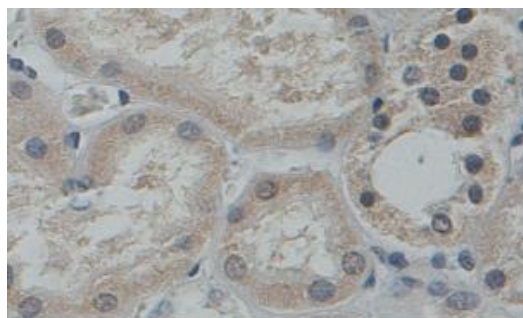
Application:

For research use only

Peptide ELISA titer: 1:40,000-1:80,000

Immunohistochemistry: 1:50-200

Optimal dilutions/concentrations should be determined by the end use.



Immunohistochemical staining of formalin-fixed paraffin-embedded fetal kidney showing cytoplasmic staining with anti-APAF1 antibody at a dilution of 1/100

Dilution instruction and storage:

Reconstitute in 200ul sterile H₂O.

The lyophilized antibody is stable for at least one year when stored at -20°C after reconstitution.

Avoid repeated freeze/thaw cycles.

Reference:

(1) Kim,D.H., Xu,W., Ma,C., et al. Genetic variants in the candidate genes of the apoptosis pathway and susceptibility to chronic myeloid leukemia. Blood 113 (11), 2517-2525 (2009)

For Research Use Only