



KAP1 Antibody

E300628a

KAP1 full name:

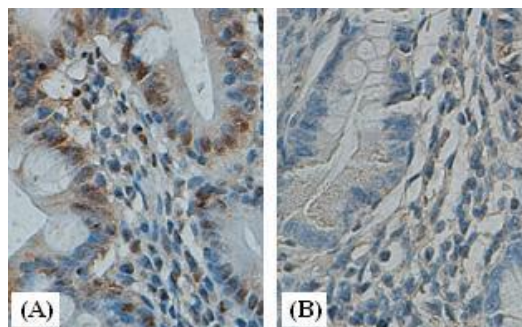
KRAB Associated Protein 1

Product description:

Formulation: Lyophilized anti-KAP1 antibody purified by peptide affinity column containing 2% BSA and 0.02% NaN₃

Catalog No.: E300628a

Size: 100ul/200ul



Immunohistochemical staining of formalin-fixed paraffin-embedded fetal small intestine showing nuclear staining with anti-KAP1 antibody at a dilution of 1/100(A), block with immunizing peptide(B).

Source:

Rabbit polyclonal KAP1⁽¹⁾ antibody was raised against a 14 amino acid peptide at the C terminal residues of human KAP1 protein.

Dilution instruction and storage:

Already reconstituted in 200ul sterile H₂O. The antibody is stable for at least one year when stored at -20°C after reconstitution.

Avoid repeated freeze/thaw cycles.

Species Reactivity:

Human

Not yet tested in other species.

Reference:

(1) Chang, C.J., Chen, Y.L. and Lee, S.C. Coactivator TIF1beta interacts with transcription factor C/EBP beta and glucocorticoid receptor to induce alpha1-acid glycoprotein gene expression. Mol Cell Biol. 1998;18:5880-5887.

Application:

For research use only

Peptide ELISA titer: 1:40,000-1:80,000

Immunohistochemistry: 1:50-200

Optimal dilutions/concentrations should be determined by the end user.

For Research Use Only