



Kinesin 1 Antibody

E300631

Product description:

Formulation: Lyophilized anti-Kinesin 1 antibody purified by peptide affinity column containing 2% BSA and 0.02% NaN₃

Catalog No.: E300631

Size: 100ug/200ul

Source:

Rabbit polyclonal Kinesin 1⁽¹⁾ antibody was raised against a peptide at the C terminal residues of human Kinesin 1 protein.

Species Reactivity:

Human

Not yet tested in other species.

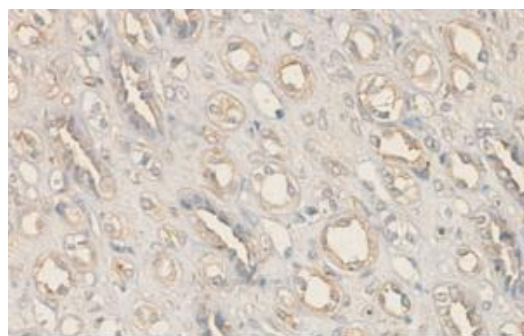
Application:

For research use only

Peptide ELISA titer: 1:40,000-1:80,000

Immunohistochemistry: 1:50-200

Optimal dilutions/concentrations should be determined by the end user.



Immunohistochemical staining of formalin-fixed paraffin-embedded fetal kidney showing cytoplasmic staining with anti-Kinesin 1 antibody at a dilution of 1/100.

Dilution instruction and storage:

Already reconstituted in 200ul sterile H₂O. The antibody is stable for at least one year when stored at -20°C after reconstitution.

Avoid repeated freeze/thaw cycles.

Reference:

(1) Cho, K.I., Yi, H., Desai, R., et al. RANBP2 is an allosteric activator of the conventional kinesin-1 motor protein, KIF5B, in a minimal cell-free system. *EMBO Rep.* 10 (5), 480-486 (2009)

For Research Use Only