



KLF15 Antibody

E300632

KLF15 full name:

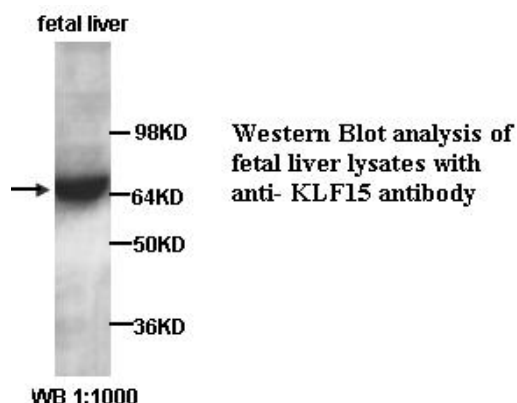
Kruppel-like factor 15

Product description:

Formulation: Lyophilized anti-KLF15 antibody purified by peptide affinity column containing 0.5% BSA and 0.02% NaN₃

Catalog No.: E300632

Size: 100ul/200ul

**Source:**

Rabbit polyclonal KLF15 ⁽¹⁾ antibody was raised against a 14 amino acid peptide at the N terminal residues of human KLF15 protein.

Dilution instruction and storage:

Already reconstituted in 200ul sterile H₂O. The antibody is stable for at least one year when stored at -20°C after reconstitution.

Avoid repeated freeze/thaw cycles.

Species Reactivity:

Human

Not yet tested in other species.

Reference:

(1)Otteson,D.C., Lai,H., Liu,Y.et,al
Zinc-finger domains of the transcriptional repressor KLF15 bind multiple sites in rhodopsin and IRBP promoters including the CRS-1 and G-rich repressor elements.
BMC Molecular Biology.2005,6:15.

Application:

For research use only

Peptide ELISA titer: 1:20,000-1:80,000

Western blot analysis: 1:500-1:2,000

Optimal dilutions/concentrations should be determined by the end user.

For Research Use Only