



KLF4 Antibody

E300636

Product description:

Formulation: Lyophilized anti-KLF4 antibody purified by peptide affinity column containing 1% BSA and 0.02% NaN₃

Catalog No.: E300636

Size: 100ul/200ul

Source:

Rabbit polyclonal KLF4⁽¹⁾ antibody was raised against a 15 amino acid peptide at the N terminal residues of human KLF4 protein.

Species Reactivity:

Human, mus, rat

Not yet tested in other species.

Application:

For research use only

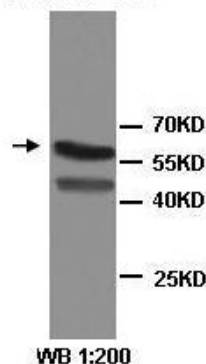
Peptide ELISA titer: 1:20,000-1:80,000

Western blot analysis: 1:100-1:500

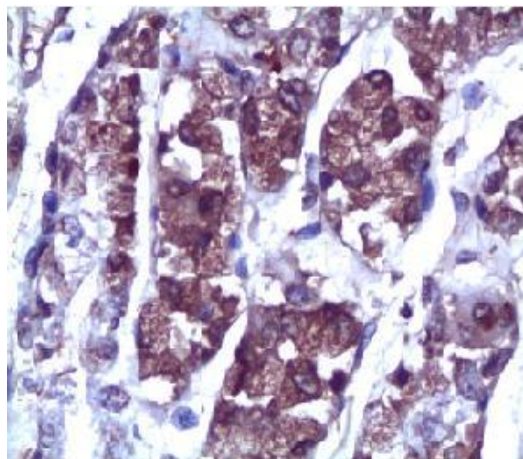
Immunohistochemistry: 1:50-200

Optimal dilutions/concentrations should be determined by the end user.

Fetal stomach



Western Blot analysis of fetal stomach lysates with anti- KLF4 antibody



Immunohistochemical staining of formalin-fixed paraffin-embedeed lymph nodes showing cytoplasmic staining with anti-KLF4 antibody dilution:1:100 (×40)

Dilution instruction and storage:

Already reconstituted in 200ul sterile H₂O. The antibody is stable for at least one year when stored at -20°C after reconstitution.

Avoid repeated freeze/defrost cycles.

Reference:

(1) Whitney,E.M., Ghaleb,A.M., Chen,X et,al
Transcriptional profiling of the cell cycle checkpoint gene kruppel-like factor 4 reveals a global inhibitory function in macromolecular biosynthesis. Gene Expr. 2006; 13(2): 85–96

For Research Use Only