



BCL10 antibody

E300652

Product description:

Formulation: Lyophilized anti-BCL10 antibody purified by peptide affinity column containing 1% BSA and 0.02% NaN₃

Catalog No.: E300652

Size: 100ug/200ul

Source:

Rabbit polyclonal BCL10 antibody was raised against a peptide from the C terminal residues of human BCL10 protein.

Species Reactivity:

Human

Not yet tested in other species.

Application:

For research use only

Peptide ELISA titer: 1:5,000-1:20,000

Western blot analysis: 1:200-1:500

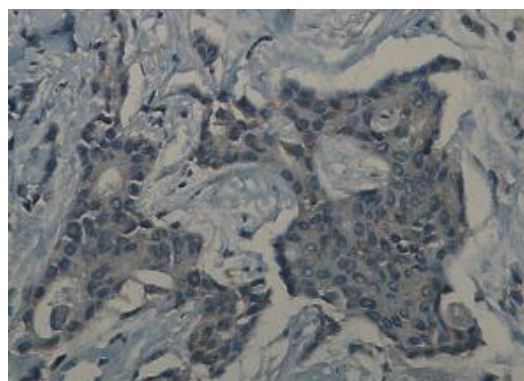
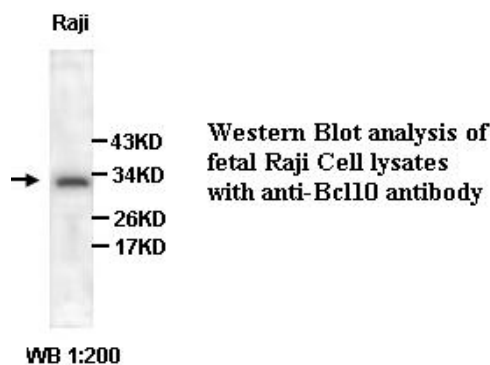
Immunohistochemistry: 1:50-200

Optimal dilutions/concentrations should be determined by the end user.

Dilution instruction and storage:

Already reconstituted in 200ul sterile H₂O. The antibody is stable for at least one year when stored at -20°C after reconstitution.

Avoid repeated freeze/defrost cycles.



Immunohistochemical staining of formalin-fixed paraffin-embedded breast carcinoma showing Cytoplasmic staining with anti-Bcl10 antibody dilution: 1:100.

Reference:

(1)McCully,R.R. and Pomerantz,J.L. The protein kinase C-responsive inhibitory domain of CARD11 functions in NF-kappaB activation to regulate the association of multiple signaling cofactors that differentially depend on Bcl10 and MALT1 for association. Mol. Cell. Biol. 28 (18), 5668-5686 (2008)

For Research Use Only