



CREB1 Antibody

E300661

Product description:

Formulation: Lyophilized anti-CREB1 antibody purified by peptide affinity column containing 2% BSA and 0.02% NaN₃

Catalog No.: E300661

Size: 100ug/200ul

Source:

Rabbit polyclonal CREB1⁽¹⁾ antibody was raised against a peptide near intermediate residues of human CREB1 protein.

Species Reactivity:

Human, mus, rat

Not yet tested in other species.

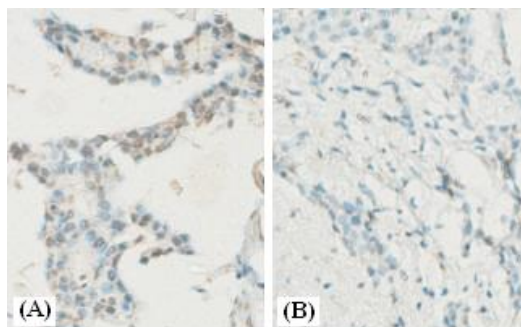
Application:

For research use only

Peptide ELISA titer: 1:40,000-1:80,000

Immunohistochemistry: 1:50-200

Optimal dilutions/concentrations should be determined by the end user.



Immunohistochemical staining of formalin-fixed paraffin-embedded breast carcinoma showing nuclear staining with anti-CREB1 antibody at a dilution of 1/100(A), block with immunizing peptide(B).

Dilution instruction and storage:

Already reconstituted in 200ul sterile H₂O. The antibody is stable for at least one year when stored at -20°C after reconstitution.

Avoid repeated freeze/defrost cycles.

Reference:

(1) James, M.A., Lu, Y., Liu, Y., et al. RGS17, an overexpressed gene in human lung and prostate cancer, induces tumor cell proliferation through the cyclic AMP-PKA-CREB pathway. *Cancer Res.* 69 (5), 2108-2116 (2009)

For Research Use Only