



## CREB1 Antibody

E300662a

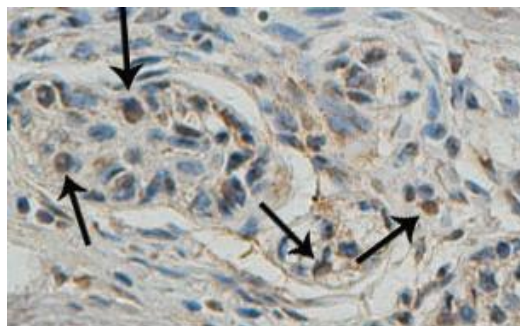
**CREB1 full name:** cAMP responsive element binding protein 1

**Product description:**

Formulation: Lyophilized anti-CREB1 antibody purified by peptide affinity column containing 2% BSA and 0.02% NaN<sub>3</sub>

Catalog No.: E300662a

Size: 100ug/200ul



Immunohistochemical staining of formalin-fixed paraffin-embedded prostatic carcinoma showing nuclear staining with anti-CREB1 antibody at a dilution of 1/100.

**Source:**

Rabbit polyclonal CREB1<sup>(1)</sup> antibody was raised against a 15 amino acid peptide from near the N terminal residues of human CREB1 protein.

**Dilution instruction and storage:**

Already reconstituted in 200ul sterile H<sub>2</sub>O. The antibody is stable for at least one year when stored at -20°C after reconstitution.

Avoid repeated freeze/thaw cycles.

**Species Reactivity:**

Human, rat, mus

Not yet tested in other species.

**Reference:**

(1) Gudi,T., Casteel,D.E., Vinson,C et,al NO activation of fos promoter elements requires nuclear translocation of G-kinase I and CREB phosphorylation but is independent of MAP kinase activation.Oncogene 2000: 19 (54), 6324-6333.

**Application:**

For research use only

Peptide ELISA titer: 1:10,000-1:40,000

Immunohistochemistry: 1:50-200

Optimal dilutions/concentrations should be determined by the end user.

**For Research Use Only**