



## Nucleophosmin Antibody

E300671

### Product description:

Formulation: Lyophilized nucleophosmin antibody purified by peptide affinity column containing 1% BSA and 0.02%  $\text{NaN}_3$

Catalog No.: E300671

Size: 100ug/200ul

### Source:

Rabbit polyclonal Nucleophosmin <sup>(1)</sup> antibody was raised against a 15 amino acid peptide at the C terminal residues of human Nucleophosmin protein.

### Species Reactivity:

Human, rat, mouse

Not yet tested in other species.

### Application:

For research use only

Peptide ELISA titer: 1:20,000-1:80,000

Western blot analysis: 1:200-1:500

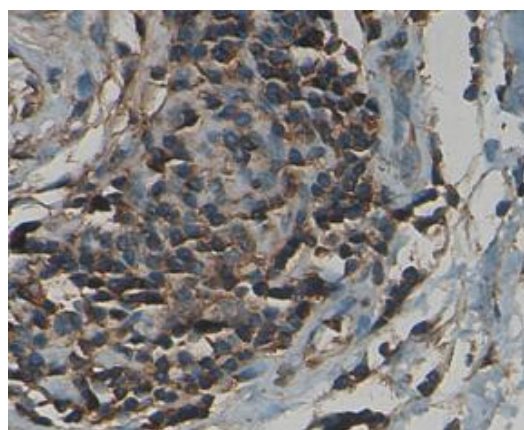
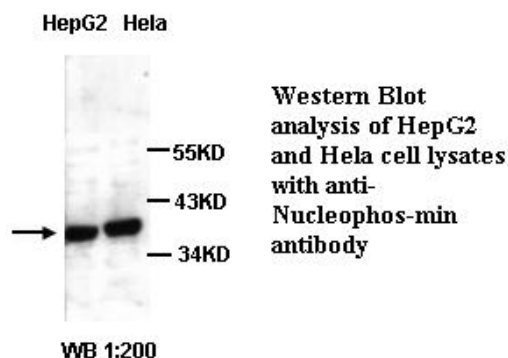
Immunohistochemistry: 1:200-500

Optimal dilutions/concentrations should be determined by the end user.

### Dilution instruction and storage:

Already reconstituted in 200ul sterile  $\text{H}_2\text{O}$ . The antibody is stable for at least one year when stored at  $-20^\circ\text{C}$  after reconstitution.

Avoid repeated freeze/thaw cycles.



Immunohistochemical staining of formalin-fixed paraffin-embedded breast carcinoma showing nuclear staining with anti-Nucleophosmin antibody dilution: 1:100.

### Reference:

- (1) Cochrane, A.W., Perkins, A. and Rosen, C.A. Identification of sequences important in the nucleolar localization of human immunodeficiency virus Rev: relevance of nucleolar localization to function. J. Virol. 1990;64 (2): 881-885.

**For Research Use Only**