



KPNB1 Antibody

E3300676

KPNB1 full name:

karyopherin (importin) beta 1

Product description:

Formulation: Lyophilized anti-KPNB1 antibody purified by protein A column containing 0.02% NaN₃

Catalog No.:E3300676

Size: 100ug/200ul

Source:

Rabbit polyclonal KPNB1⁽¹⁾ antibody was raised against a 15 amino acid peptide at the C terminal residues of human KPNB1 protein.

Species Reactivity:

Human, rat, mus

Not yet tested in other species.

Application:

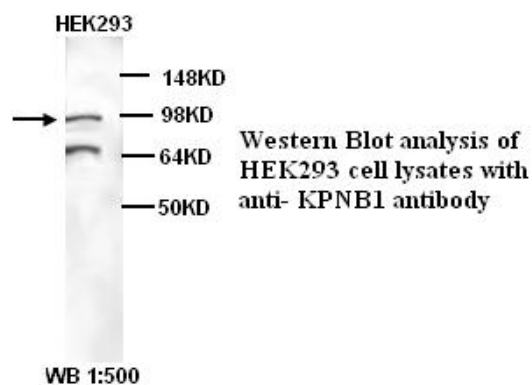
For research use only

Peptide ELISA titer: 1:20,000-1:80,000

Western blot analysis: 1:200-1,000

Optimal dilutions/concentrations should

be determined by the end user.

**Dilution instruction and storage:**

Already reconstituted in 200ul sterile H₂O. The antibody is stable for at least one year when stored at -20°C after reconstitution.

Avoid repeated freeze/defrost cycles.

Reference:

(1) Lounsbury, K.M., Richards, S.A., Perlungher, R.R. et, al Ran binding domains promote the interaction of Ran with p97/beta-karyopherin, linking the docking and translocation steps of nuclear import J. Biol. Chem. 1996;271 (5):2357-2360.

For Research Use Only