



CARM1 Antibody

E300752

Product description:

Formulation: Lyophilized anti-CARM1 antibody purified by peptide affinity column containing 2% BSA and 0.02% NaN₃

Catalog No.: E300752

Size: 100ug/200ul

Source:

Rabbit polyclonal CARM1 ⁽¹⁾ antibody was raised against a peptide at the N terminal residues of human CARM1 protein.

Species Reactivity:

Human, mus, rat

Not yet tested in other species.

Application:

For research use only

Peptide ELISA titer: 1:5,000-1:20,000

Western blot analysis: 1:200-1,000

Immunohistochemistry: 1:50-200

Optimal dilutions/concentrations should be determined by the end user.

Dilution instruction and storage:

Already reconstituted in 200ul sterile H₂O. The antibody is stable for at least one year when stored at -20°C after reconstitution.

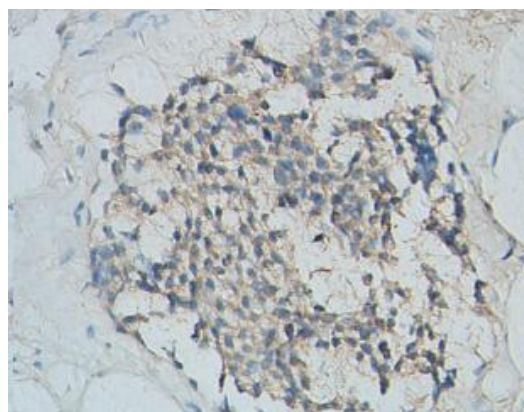
Avoid repeated freeze/thaw cycles.

Hela

— 72KD
— 55KD
— 43KD
— 34KD

Western Blot analysis of Hela cell Lysate with anti-CARM1 antibody

WB 1:500



Immunohistochemical staining of formalin-fixed paraffin-embedded prostate carcinoma showing cytoplasmic and nuclear staining with anti-CARM1 antibody dilution: 1:100.

Reference:

(1) Fauquier,L., Duboe,C., Jore,C., Trouche,D. and Vandel,L. Dual role of the arginine methyltransferase CARM1 in the regulation of c-Fos target genes. FASEB J. 22 (9), 3337-3347 (2008)

For Research Use Only