



## MEK1 Antibody

E300788

Avoid repeated freeze/thaw cycles.

### Product description:

Formulation: Lyophilized anti-MEK1 antibody purified by peptide affinity column containing 1% BSA and 0.02% NaN<sub>3</sub>

Catalog No.: E300788

Size: 100ug/200ul

### Source:

Rabbit polyclonal MEK1<sup>(1)</sup> antibody was raised against a 16 amino acid peptide from near the N terminal residues of human MEK1 protein.

### Species Reactivity:

Human

Not yet tested in other species.

### Application:

For research use only

Peptide ELISA titer: 1:1,000-1:5,000

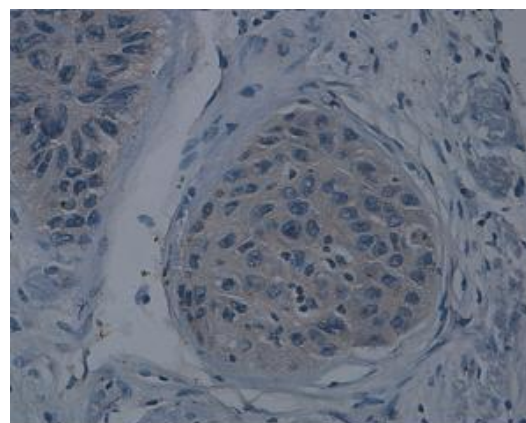
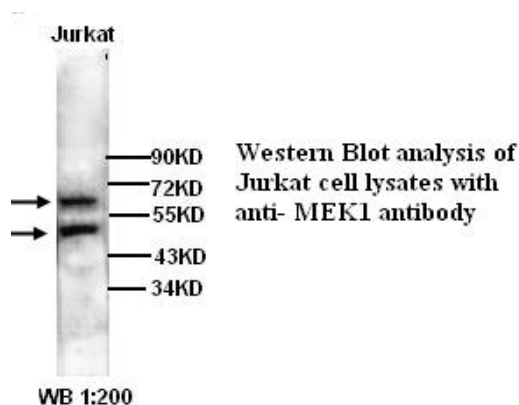
Western blot analysis: 1:200-1:500

Immunohistochemistry: 1:100-1:500

Optimal dilutions/concentrations should be determined by the end user.

### Dilution instruction and storage:

Already reconstituted in 200ul sterile H<sub>2</sub>O. The antibody is stable for at least one year when stored at -20°C after reconstitution.



Immunohistochemical staining of formalin-fixed paraffin-embedded liver carcinoma showing Cytoplasmic staining with anti-MEK1 antibody dilution: 1:100.

### Reference:

(1) Senawong, T., Phuchareon, J., Ohara, O., et al. Germline mutations of MEK in cardio-facio-cutaneous syndrome are sensitive to MEK and RAF inhibition: implications for therapeutic options. Hum. Mol. Genet. 17 (3), 419-430 (2008).

**For Research Use Only**