



selectin E Antibody

E300832

Product description:

Formulation: Lyophilized anti-selectin E antibody purified by peptide affinity column containing 1% BSA and 0.02% NaN_3

Catalog No.: E300832

Size: 100ug/200ul

Source:

Rabbit polyclonal selectin E ⁽¹⁾ antibody was raised against a 16 amino acid peptide from N terminal residues of human selectin E protein.

Species Reactivity:

Human

Not yet tested in other species.

Application:

For research use only

Peptide ELISA titer: 1:40,000-1:80,000

Western blot analysis: 1:200-500

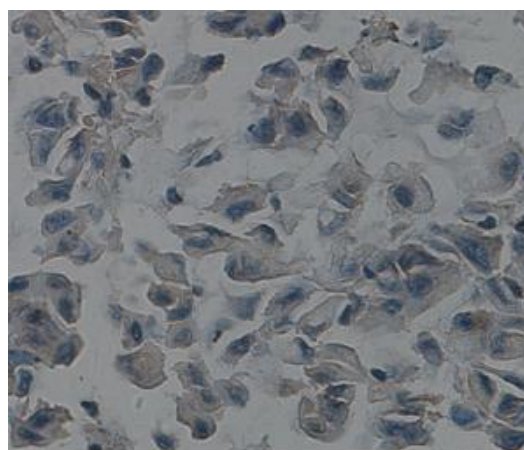
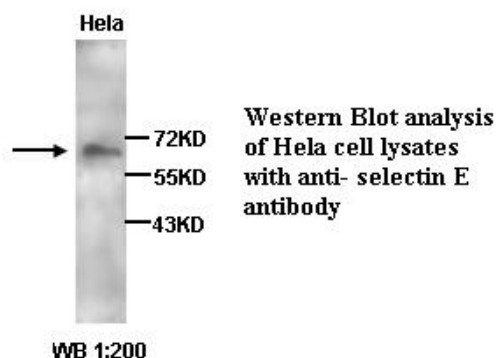
Immunohistochemistry: 1:50-500

Optimal dilutions/concentrations should be determined by the end user.

Dilution instruction and storage:

Already reconstituted in 200ul sterile H_2O . The antibody is stable for at least one year when stored at -20°C after reconstitution.

Avoid repeated freeze/thaw cycles.



Immunohistochemical staining of formalin-fixed paraffin-embedded Lung cancer showing membrane staining with anti-selectin E antibody dilution: 1:100.

Reference:

Thomas, S.N., Zhu, F., Schnaar, R.L., Alves, C.S. et al. Carcinoembryonic antigen and CD44 variant isoforms cooperate to mediate colon carcinoma cell adhesion to E- and L-selectin in shear flow. J. Biol. Chem. 2008;283(23):15647-15655.

For Research Use Only