



## PTPA antibody

E300844

**PTPA full name:** protein phosphatase 2A, regulatory subunit B

**Product description:**

Formulation: Lyophilized anti-PTPA antibody purified by peptide affinity column containing 0.5% BSA and 0.02%  $\text{NaN}_3$

Catalog No.: E300844

Size: 100ug /200ul

**Source:**

Rabbit polyclonal PTPA<sup>(1)</sup> antibody was raised against a 15 amino acid peptide from the N terminal residues of human PTPA protein.

**Species Reactivity:**

Human, mus, rat

Not yet tested in other species.

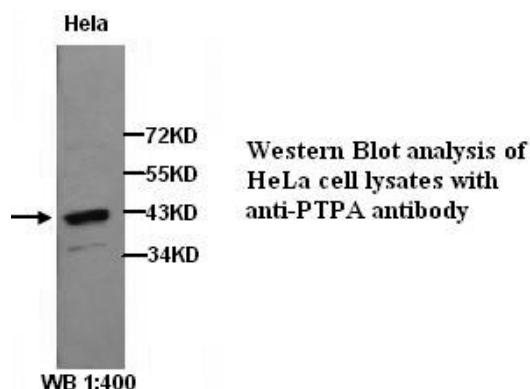
**Application:**

For research use only

Peptide ELISA titer: 1:80,000

Western blot analysis: 1:200-1,000

Optimal dilutions/concentrations should be determined by the end user.



**Dilution instruction and storage:**

Already reconstituted in 200ul sterile  $\text{H}_2\text{O}$ . The antibody is stable for at least one year when stored at  $-20^\circ\text{C}$  after reconstitution.

Avoid repeated freeze/thaw cycles.

**Reference:**

(1) Cayla,X., Van Hoof,C., Bosch,M,et,al Molecular cloning, expression, and characterization of PTPA, a protein that activates the tyrosyl phosphatase activity of protein phosphatase 2A.J. Biol. Chem. 1994; 269 (22):15668-15675.

**For Research Use Only**