



## GAPDH Antibody

E300849

**Product description:**

Formulation: Lyophilized anti-GAPDH antibody purified by peptide affinity column containing 0.5% BSA and 0.02% NaN<sub>3</sub>

Catalog No.: E300849

Size: 100ug/200ul

**Source:**

Rabbit polyclonal GAPDH <sup>(1)</sup> antibody was raised against a 13 amino acid peptide from the C terminal residues of human GAPDH protein.

**Species Reactivity:**

Human

Not yet tested in other species.

**Application:**

For research use only

Peptide ELISA titer: 1:20,000-1:80,000

Western blot analysis: 1:1,000-1:2,000

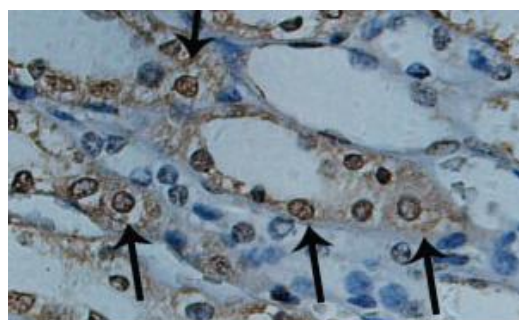
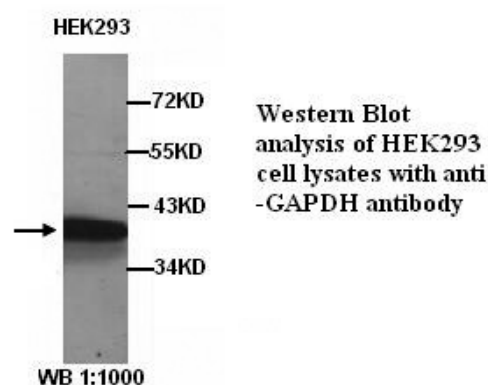
Immunohistochemistry: 1:50-1:200

Optimal dilutions/concentrations should be determined by the end user.

**Dilution instruction and storage:**

Already reconstituted in 200ul sterile H<sub>2</sub>O. The antibody is stable for at least one year when stored at -20°C after reconstitution.

Avoid repeated freeze/thaw cycles.



Immunohistochemical staining of formalin-fixed paraffin-embedded fetal kidney showing Cytoplasmic and Nuclear staining with anti-GAPDH antibody at a dilution of 1/100.

**Reference:**

- (1) Said, H.M., Hagemann, C., Stojic, J. GAPDH is not regulated in human glioblastoma under hypoxic conditions (in press) BMC Mol. Biol. 8, 55 (2007).

**For Research Use Only**