



COMMD1 Antibody

E300877

Product description:

Formulation: Lyophilized COMMD1 antibody purified by peptide affinity column containing 2% BSA and 0.02% NaN₃

Catalog No.: E300877

Size: 100ug/200ul

Source:

Rabbit polyclonal COMMD1 ⁽¹⁾ antibody was raised against a 16 amino acid peptide from near the C terminal residues of human COMMD1 protein.

Species Reactivity:

Human

Not yet tested in other species.

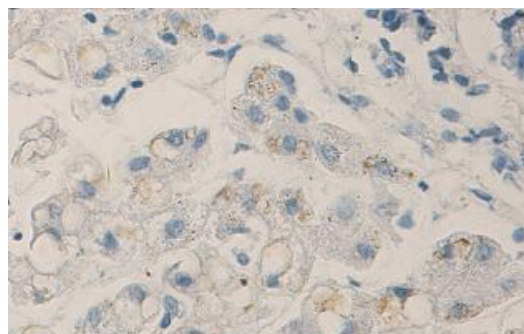
Application:

For research use only

Peptide ELISA titer: 1:1,000-1:40,000

Immunohistochemistry: 1:50-500

Optimal dilutions/concentrations should be determined by the end user.



Immunohistochemical staining of formalin-fixed paraffin-embedded liver showing cytoplasmic staining with anti-COMMD1 antibody dilution: 1:100.

Dilution instruction and storage:

Already reconstituted in 200ul sterile H₂O. The antibody is stable for at least one year when stored at -20°C after reconstitution.

Avoid repeated freeze/thaw cycles.

Reference:

(1) Weiss, K.H., Lozoya, J.C., Tuma, S., et al. Copper-induced translocation of the Wilson disease protein ATP7B independent of Murr1/COMMD1 and Rab7. *Am. J. Pathol.* 173 (6), 1783-1794 (2008)

For Research Use Only