



RB1 Antibody

E300968

Product description:

Formulation: Lyophilized anti-RB1 antibody purified by peptide affinity column containing 0.5% BSA and 0.02% NaN₃

Catalog No.: E300968

Size: 100ug/200ul

Source:

Rabbit polyclonal RB1⁽¹⁾ antibody was raised against a 14 amino acid peptide from near the C terminal residues of human RB1 protein.

Species Reactivity:

Human

Not yet tested in other species.

Application:

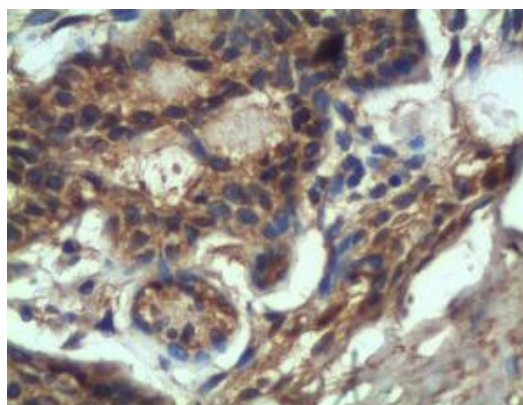
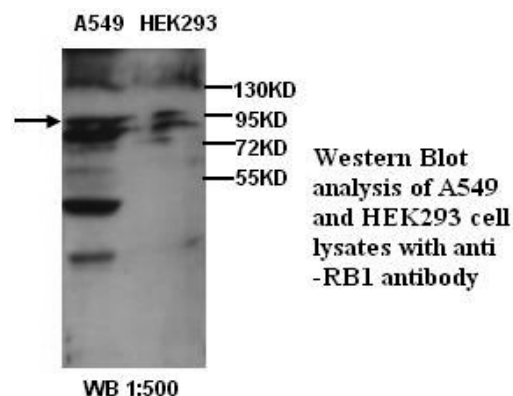
For research use only

Peptide ELISA titer: 1:20,000

Western blot analysis: 1:250-1,000

Immunohistochemistry: 1:50-200

Optimal dilutions/concentrations should be determined by the end user.



Immunohistochemical staining of formalin-fixed paraffin-embedded breast cancer showing nucleus staining with anti-RB1 antibody dilution: 1:100

Dilution instruction and storage:

Already reconstituted in 200ul sterile H₂O. The antibody is stable for at least one year when stored at -20°C after reconstitution.

Avoid repeated freeze/thaw cycles.

Reference:

(1) Hogg, A., Onadim, Z., Baird, P.N. Detection of heterozygous mutations in the RB1 gene in retinoblastoma patients using single-strand conformation polymorphism analysis and polymerase chain reaction sequencing Oncogene 1992; 7 (7), 1445-1451

For Research Use Only