



## CLOCK Antibody

E300995

**Product description:**

Formulation: Lyophilized anti-CLOCK antibody purified by peptide affinity column containing 1% BSA and 0.02% NaN<sub>3</sub>

Catalog No.: E300995

Size: 100ug/200ul

**Source:**

Rabbit polyclonal CLOCK<sup>(1)</sup> antibody was raised against a 15 amino acid peptide from near the C terminal residues of human CLOCK protein.

**Species Reactivity:**

Human, mus, rat

Not yet tested in other species.

**Application:**

For research use only

Peptide ELISA titer: 1:20,000-1:80,000

Western blot analysis: 1:200-500

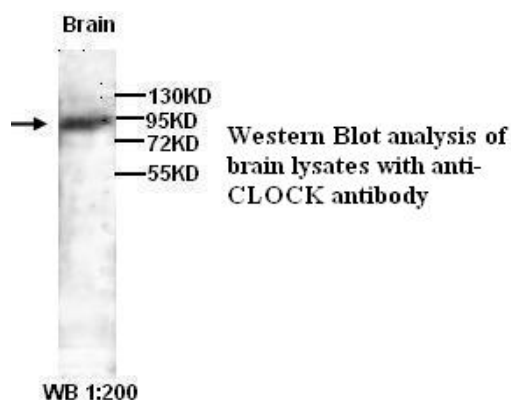
Immunohistochemistry: 1:100-500

Optimal dilutions/concentrations should be determined by the end user.

**Dilution instruction and storage:**

Already reconstituted in 200ul sterile H<sub>2</sub>O. The antibody is stable for at least one year when stored at -20°C after reconstitution.

Avoid repeated freeze/thaw cycles.



Immunohistochemical staining of formalin-fixed paraffin-embedded skeletal muscle showing cytoplasmic and nuclear staining with anti-CLOCK antibody dilution: 1:100.

**Reference:**

(1) Monteleone, P., Tortorella, A., Docimo, L., et al. Investigation of 3111T/C polymorphism of the CLOCK gene in obese individuals with or without binge eating disorder: association with higher body mass index. *Neurosci. Lett.* 435 (1), 30-33 (2008)

**For Research Use Only**