



## GSK3B Antibody

E301022

**Product description:**

Formulation: Lyophilized anti-GSK3B antibody purified by peptide affinity column containing 2% BSA and 0.02% NaN<sub>3</sub>

Catalog No.: E301022

Size: 100ug/200ul

**Source:**

Rabbit polyclonal GSK3B <sup>(1)</sup> antibody was raised against a peptide at the C terminal residues of human GSK3B protein.

**Species Reactivity:**

Human

Not yet tested in other species.

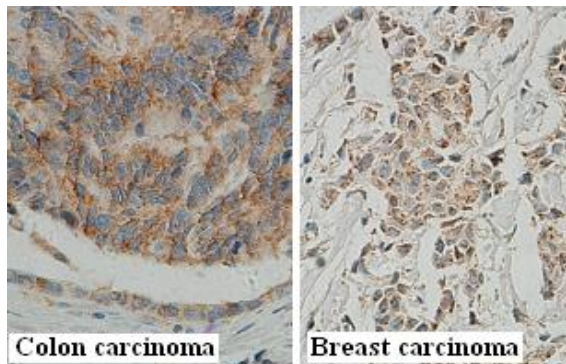
**Application:**

For research use only

Peptide ELISA titer: 1:10,000-1:40,000

Immunohistochemistry: 1:50-200

Optimal dilutions/concentrations should be determined by the end user.



Immunohistochemical staining of formalin-fixed paraffin-embedded colon carcinoma and breast carcinoma showing cytoplasmic staining with anti-GSK3B antibody at a dilution of 1/100.

**Dilution instruction and storage:**

Already reconstituted in 200ul sterile H<sub>2</sub>O. The antibody is stable for at least one year when stored at -20°C after reconstitution.

Avoid repeated freeze/thaw cycles.

**Reference:**

(1) Tian,D., Zhu,M., Li,J., Ma,Y. and Wu,R. Cigarette smoke extract induces activation of beta-catenin/TCF signaling through inhibiting GSK3beta in human alveolar epithelial cell line.Toxicol. Lett. 187 (1), 58-62 (2009)

**For Research Use Only**