



apelin Antibody

E301033

Product description:

Formulation: Lyophilized apelin antibody purified by peptide affinity column containing 2% BSA and 0.02% NaN₃

Catalog No.: E301033

Size: 100ug/200ul

Source:

Rabbit polyclonal apelin ⁽¹⁾ antibody was raised against a peptide from near the C terminal residues of human apelin protein.

Species Reactivity:

Human, mus

Not yet tested in other species.

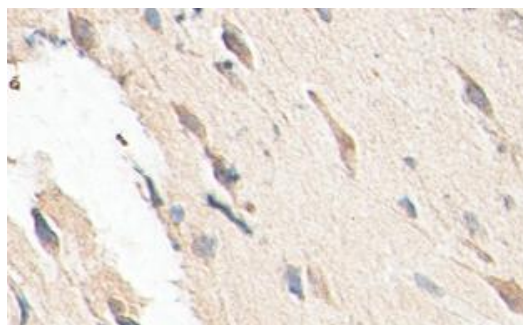
Application:

For research use only

Peptide ELISA titer: 1:10,000-1:40,000

Immunohistochemistry: 1:50-200

Optimal dilutions/concentrations should be determined by the end user.



Immunohistochemical staining of formalin-fixed paraffin-embedded brain staining with anti-apelin antibody at a dilution of 1/100.

Dilution instruction and storage:

Already reconstituted in 200ul sterile H₂O. The antibody is stable for at least one year when stored at -20°C after reconstitution.

Avoid repeated freeze/thaw cycles.

Reference:

(1) D'Aniello, C., Lonardo, E., Iaconis, S., et al. G protein-coupled receptor APJ and its ligand apelin act downstream of Cripto to specify embryonic stem cells toward the cardiac lineage through extracellular signal-regulated kinase/p70S6 kinase signaling pathway. *Circ. Res.* 105 (3), 231-238 (2009)

For Research Use Only