



SP1 Antibody

E301059

Product description:

Formulation: Lyophilized anti-SP1 antibody purified by peptide affinity column containing 1% BSA and 0.02% NaN₃

Catalog No.: E301059

Size: 100ug/200ul

Source:

Rabbit polyclonal SP1⁽¹⁾ antibody was raised against a 16 amino acid peptide from near the C terminal residues of human SP1 protein.

Species Reactivity:

Human, mus, rat

Not yet tested in other species.

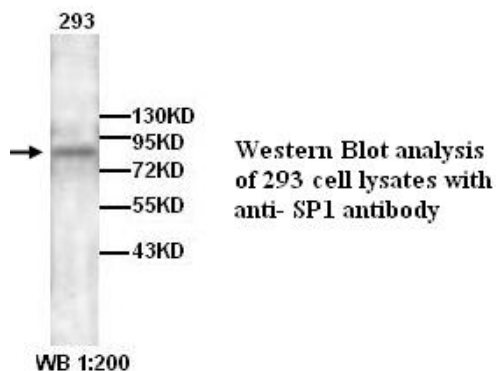
Application:

For research use only

Peptide ELISA titer: 1:1,000-1:5,000

Western blot analysis: 1:200-500

Optimal dilutions/concentrations should be determined by the end user.

**Dilution instruction and storage:**

Already reconstituted in 200ul sterile H₂O. The antibody is stable for at least one year when stored at -20°C after reconstitution.

Avoid repeated freeze/thaw cycles.

Reference:

(1) Takahashi, K., Hayashi, N., Shimokawa, T., et al. Cooperative regulation of Fc receptor gamma-chain gene expression by multiple transcription factors, including Sp1, GABP, and Elf-1. J. Biol. Chem. 283 (22), 15134-15141 (2008).

For Research Use Only