



CTGF Antibody

E301065

Product description:

Formulation: Lyophilized rabbit anti-CTGF purified by peptide affinity column containing 1% BSA and 0.02% NaN_3

Catalog No.: E301065

Size: 100mg/200ul

Source:

Rabbit polyclonal CTGF⁽¹⁾ antibody was raised against a 16 amino acid peptide corresponding to near the C terminal residues of Human CTGF.

Species Reactivity:

Human, mus, rat

Not yet tested in other species.

Application:

For research use only

Peptide ELISA titer: 1:5,000-1:20,000

Western blot analysis: 1:500-1:1,000

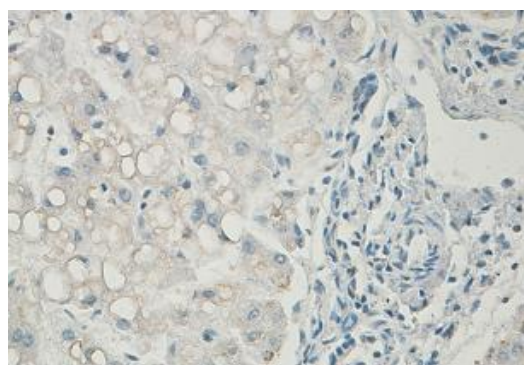
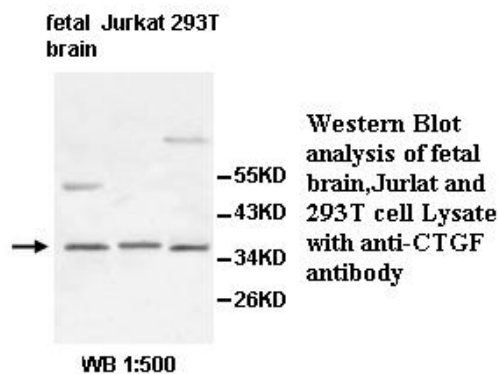
Immunohistochemistry: 1:50-1:200

Optimal dilutions/concentrations should be determined by the end user.

Dilution instruction and storage:

Already reconstituted in 200ul sterile H_2O . The antibody is stable for at least one year when stored at -20°C after reconstitution.

Avoid repeated freeze/defrost cycles.



Immunohistochemical staining of formalin-fixed paraffin-embedded fetal liver staining with anti-CTGF antibody at a dilution of 1/100.

Reference:

(1) Nguyen, T.Q., Tarnow, L., Jorsal, A., et al. Plasma connective tissue growth factor is an independent predictor of end-stage renal disease and mortality in type 1 diabetic nephropathy. Diabetes Care. 2008;31(6):1177-1182.

For Research Use Only