



IFIH1 Antibody

E301088

Product description:

Formulation: Lyophilized IFIH1 antibody purified by peptide affinity column containing 2% BSA and 0.02% NaN₃

Catalog No.: E301088

Size: 100ug/200ul

Source:

Rabbit polyclonal IFIH1⁽¹⁾ antibody was raised against a peptide from near the N terminal residues of human IFIH1 protein.

Species Reactivity:

Human

Not yet tested in other species.

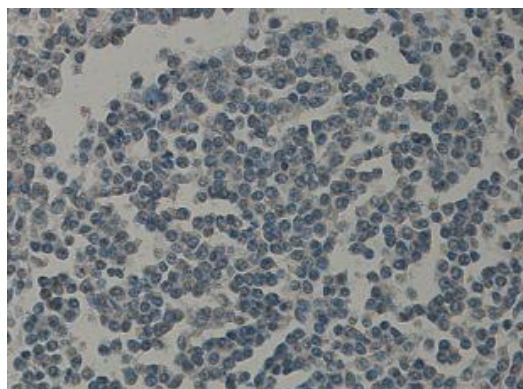
Application:

For research use only

Peptide ELISA titer: 1:1,000-1:10,000

Immunohistochemistry: 1:100-500

Optimal dilutions/concentrations should be determined by the end user.



Immunohistochemical staining of formalin-fixed paraffin-embedded spleen showing cytoplasmic and nuclear staining with anti-IFIH1 antibody dilution: 1:50.

Dilution instruction and storage:

Already reconstituted in 200ul sterile H₂O. The antibody is stable for at least one year when stored at -20°C after reconstitution.

Avoid repeated freeze/thaw cycles.

Reference:

(1) Liu, S., Wang, H., Jin, Y., et al. IFIH1 polymorphisms are significantly associated with type 1 diabetes and IFIH1 gene expression in peripheral blood mononuclear cells. Hum. Mol. Genet. 18 (2), 358-365 (2009)

For Research Use Only