



## NAT1 Antibody

E301144

**Product description:**

Formulation: Lyophilized NAT1 antibody purified by peptide affinity column containing 2% BSA and 0.02% NaN<sub>3</sub>

Catalog No.: E301144

Size: 100ug/200ul

**Source:**

Rabbit polyclonal NAT1<sup>(1)</sup> antibody was raised against a peptide from near the C terminal residues of human NAT1 protein.

**Species Reactivity:**

Human

Not yet tested in other species.

**Application:**

For research use only

Peptide ELISA titer: 1:40,000-1:80,000

Western blot analysis: 1:500-1:1,000

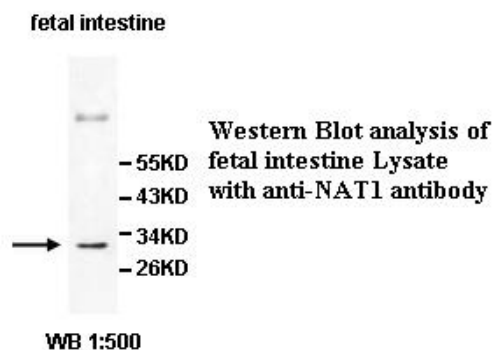
Immunohistochemistry: 1:50-1:200

Optimal dilutions/concentrations should be determined by the end user.

**Dilution instruction and storage:**

Already reconstituted in 200ul sterile H<sub>2</sub>O. The antibody is stable for at least one year when stored at -20°C after reconstitution.

Avoid repeated freeze/thaw cycles.



Immunohistochemical staining of formalin-fixed paraffin-embedded brain showing Cytoplasmic staining with anti- NAT1 antibody at a dilution of 1/100.

**Reference:**

(1) Dai,Y., Leng,S., Li,L., et al.Effects of genetic polymorphisms of N-Acetyltransferase on trichloroethylene-induced hypersensitivity dermatitis among exposed workers.Ind Health 47 (5), 479-486

**For Research Use Only**