



## MMP1 Antibody

E301158

### Product description:

Formulation: Lyophilized anti-MMP1 antibody purified by peptide affinity column containing 2% BSA and 0.02% NaN<sub>3</sub>

Catalog No.: E301158

Size: 100ug/200ul

### Source:

Rabbit polyclonal MMP1<sup>(1)</sup> antibody was raised against a peptide at the C terminal residues of human MMP1.

### Species Reactivity:

Human

Not yet tested in other species.

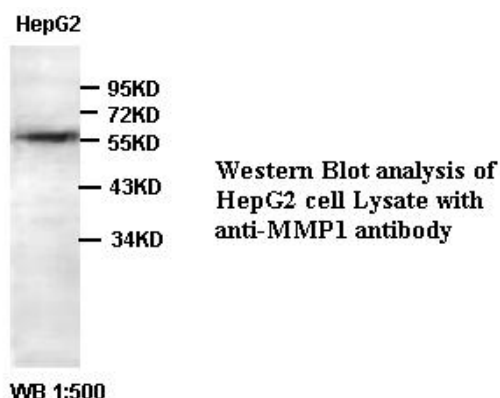
### Application:

For research use only

Peptide ELISA titer: 1:5,000-1:20,000

Western blot analysis: 1:200-1,000

Optimal dilutions/concentrations should be determined by the end use



### Dilution instruction and storage:

Already reconstituted in 200ul sterile H<sub>2</sub>O. The antibody is stable for at least one year when stored at -20°C after reconstitution.

Avoid repeated freeze/thaw cycles.

### Reference:

(1) Repeke, C.E., Trombone, A.P., Ferreira, S.B. et al. Strong and persistent microbial and inflammatory stimuli overcome the genetic predisposition to higher matrix metalloproteinase-1 (MMP-1) expression: a mechanistic explanation for the lack of association of MMP1-1607 single-nucleotide polymorphism genotypes with MMP-1 expression in chronic periodontitis lesions. J. Clin. Periodontol. 36 (9), 726-738 (2009)

**For Research Use Only**