



## MMP1 Antibody

E301159a

### Product description:

Formulation: Lyophilized anti-MMP1 antibody purified by peptide affinity column containing 2% BSA and 0.02% NaN<sub>3</sub>

Catalog No.: E301159a

Size: 100ug/200ul

### Source:

Rabbit polyclonal MMP1 antibody was raised against a peptide at the intermediate residues of human MMP1 protein.

### Species Reactivity:

Human

Not yet tested in other species.

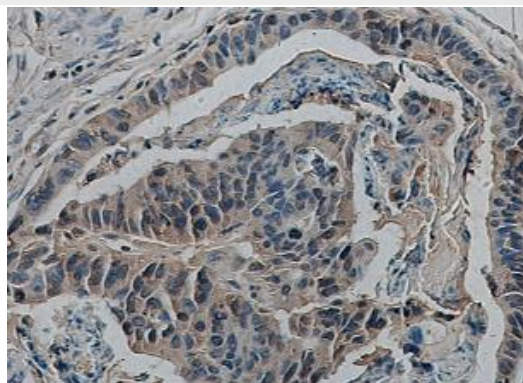
### Application:

For research use only

Peptide ELISA titer: 1:1,000-1:10,000

Immunohistochemistry: 1:200-500

Optimal dilutions/concentrations should be determined by the end use.



Immunohistochemical staining of formalin-fixed paraffin-embedded colon cancer showing secreted protein staining with anti-MMP1 antibody dilution: 1:200.

### Dilution instruction and storage:

Already reconstituted in 200ul sterile H<sub>2</sub>O. The antibody is stable for at least one year when stored at -20°C after reconstitution.

Avoid repeated freeze/thaw cycles.

### Reference:

(1)Checa,M., Ruiz,V., Montano,M., et al.  
MMP-1 polymorphisms and the risk of idiopathic pulmonary fibrosis. Hum Genet. 124 (5), 465-472 (2008)

**For Research Use Only**