



## MMP1 Antibody

E301159b

be determined by the end use.

**Product description:**

Formulation: Lyophilized anti-MMP1 antibody purified by protein A column containing 0.02%  $\text{NaN}_3$

Catalog No.:E301159b

Size: 200ul

**Source:**

Rabbit polyclonal MMP1 antibody was raised against a peptide at the intermediate residues of human MMP1 protein.

**Species Reactivity:**

Human

Not yet tested in other species.

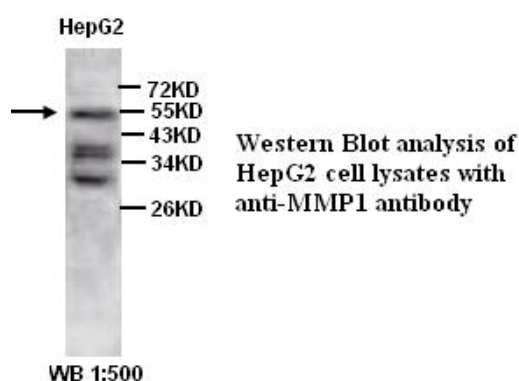
**Application:**

For research use only

Peptide ELISA titer: 1:1,000-1:10,000

Western blot analysis: 1:500-1,000

Optimal dilutions/concentrations should

**Dilution instruction and storage:**

Already reconstituted in 200ul sterile  $\text{H}_2\text{O}$ . The antibody is stable for at least one year when stored at  $-20^\circ\text{C}$  after reconstitution.

Avoid repeated freeze/thaw cycles.

**Reference:**

(1)Checa,M., Ruiz,V., Montano,M., et al.  
MMP-1 polymorphisms and the risk of idiopathic pulmonary fibrosis. Hum Genet. 124 (5), 465-472 (2008)

**For Research Use Only**