



GLUT Antibody

E301181

Product description:

Formulation: Lyophilized anti-GLUT antibody purified by peptide affinity column containing 1% BSA and 0.02% NaN₃

Catalog No.: E301181

Size: 200ul

Source:

Rabbit polyclonal GLUT⁽¹⁾ antibody was raised against a 16 amino acid peptide from N terminal residues of human GLUT protein.

Species Reactivity:

Human, mus, rat

Not yet tested in other species.

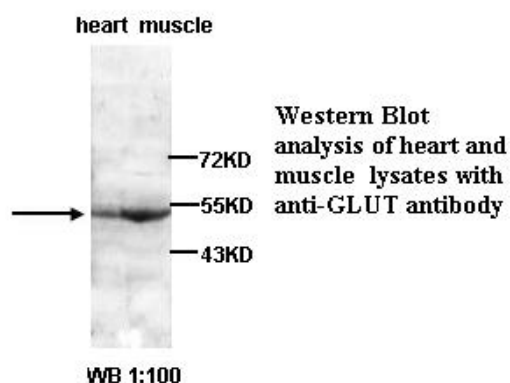
Application:

For research use only

Peptide ELISA titer: 1:1,000-1:10,000

Western blot analysis: 1:200-1:500

Optimal dilutions/concentrations should be determined by the end use.

**Dilution instruction and storage:**

Already reconstituted in 200ul sterile H₂O. The antibody is stable for at least one year when stored at -20°C after reconstitution.

Avoid repeated freeze/thaw cycles.

Reference:

(1)Makni,K., Mnif,F., Boudawara,M., et al.Association of glucose transporter 1 polymorphisms with type 2 diabetes in the Tunisian population. Diabetes Metab. Res. Rev. 24 (7), 544-548 (2008)

For Research Use Only