



## Smac/DIABLO Antibody

E301220

### Product description:

Formulation: Lyophilized Smac/DIABLO antibody purified by peptide affinity column containing 2% BSA and 0.02% NaN<sub>3</sub>

Catalog No.:E301220

Size: 100ug/200ul

### Source:

Rabbit polyclonal Smac/DIABLO <sup>(1)</sup> antibody was raised against a peptide from near the C terminal residues of human Smac/DIABLO protein.

### Species Reactivity:

Human

Not yet tested in other species.

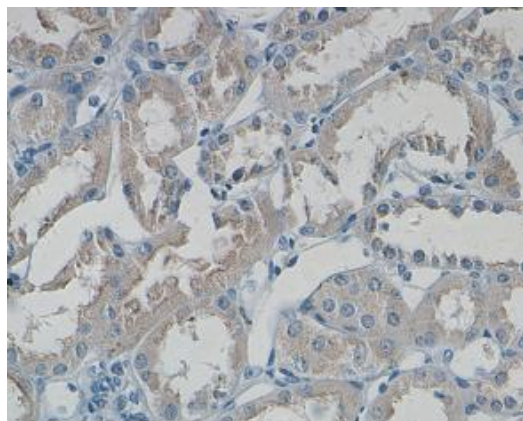
### Application:

For research use only

Peptide ELISA titer: 1:1,000-1:10,000

Immunohistochemistry: 1:50-500

Optimal dilutions/concentrations should be determined by the end user.



Immunohistochemical staining of formalin-fixed paraffin-embedded kidney showing Cytoplasmic staining with anti-Smac antibody dilution: 1:100.

### Dilution instruction and storage:

Already reconstituted in 200ul sterile H<sub>2</sub>O. The antibody is stable for at least one year when stored at -20°C after reconstitution.

Avoid repeated freeze/thaw cycles.

### Reference:

(1) Goncalves,R.B., Sanches,D., Souza,T.L., et al.The proapoptotic protein Smac/DIABLO dimer has the highest stability as measured by pressure and urea denaturation.Biochemistry 47 (12), 3832-3841 (2008)

**For Research Use Only**