



RON Antibody

E301228

Product description:

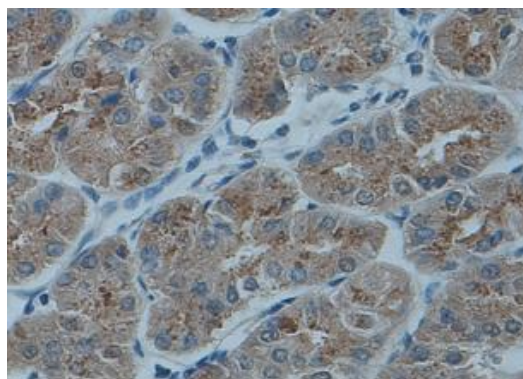
Formulation: Lyophilized RON antibody purified by peptide affinity column containing 2% BSA and 0.02% NaN₃

Catalog No.:E301228

Size: 100ug/200ul

Source:

Rabbit polyclonal RON⁽¹⁾ antibody was raised against a peptide from a peptide from near the C terminal residues of human RON protein.



Immunohistochemical staining of formalin-fixed paraffin-embedded stomach showing membrane staining with anti-RON antibody dilution: 1:200.

Species Reactivity:

Human

Not yet tested in other species.

Application:

For research use only

Peptide ELISA titer: 1:1,000-1:10,000

Immunohistochemistry: 1:100-500

Optimal dilutions/concentrations should be determined by the end user.

Dilution instruction and storage:

Already reconstituted in 200ul sterile H₂O. The antibody is stable for at least one year when stored at -20°C after reconstitution.

Avoid repeated freeze/thaw cycles.

Reference:

(1) Collesi, C., Santoro, M.M., Gaudino, G. and Comoglio, P.M. A splicing variant of the RON transcript induces constitutive tyrosine kinase activity and an invasive phenotype. *Mol. Cell. Biol.* 16 (10), 5518-5526 (1996)

For Research Use Only