



NPHS2 Antibody

E301260

Product description:

Formulation: Lyophilized anti-NPHS2 antibody purified by peptide affinity column containing 2% BSA and 0.02% NaN_3

Catalog No.: E301260

Size: 100ug/200ul

Source:

Rabbit polyclonal NPHS2⁽¹⁾ antibody was raised against a peptide from near the C terminal residues of human NPHS2 protein.

Species Reactivity:

Human, rat, mus

Not yet tested in other species.

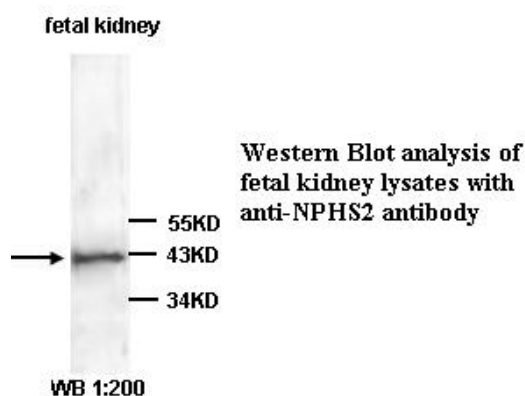
Application:

For research use only

Peptide ELISA titer: 1:5,000-1:20,000

Western blot analysis: 1:200-500

Optimal dilutions/concentrations should be determined by the end user.

**Dilution instruction and storage:**

Already reconstituted in 200ul sterile H_2O . The antibody is stable for at least one year when stored at -20°C after reconstitution.

Avoid repeated freeze/thaw cycles.

Reference:

(1) Tonna, S., Wang, Y. Y., Wilson, D., et al. The R229Q mutation in NPHS2 may predispose to proteinuria in thin-basement-membrane nephropathy. *Pediatr. Nephrol.* 23 (12), 2201-2207 (2008).

For Research Use Only