



SMAD1 Antibody

E301316

Product description:

Formulation: Lyophilized anti-SMAD1 antibody purified by peptide affinity column containing 1% BSA and 0.02% NaN_3

Catalog No.: E301316

Size: 100ug/200ul

Source:

Rabbit polyclonal SMAD1 ⁽¹⁾ antibody was raised against a peptide from the C terminal residues of human SMAD1 protein.

Species Reactivity:

Human, mus, rat

Not yet tested in other species.

Application:

For research use only

Peptide ELISA titer: 1:1000-1:10000

Western blot analysis: 1:200-1:1,000

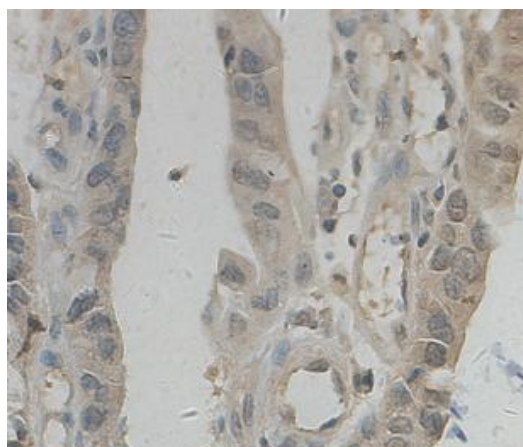
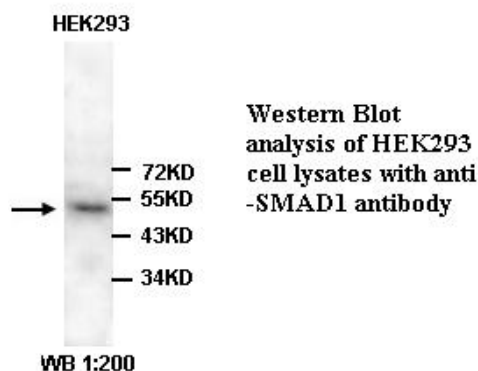
Immunohistochemistry: 1:200-500

Optimal dilutions/concentrations should be determined by the end user.

Dilution instruction and storage:

Already reconstituted in 200ul sterile H_2O . The antibody is stable for at least one year when stored at -20°C after reconstitution.

Avoid repeated freeze/thaw cycles.



Immunohistochemical staining of formalin-fixed paraffin-embedded colon showing nuclear and cytoplasmic staining with anti-SMAD1 antibody dilution: 1:100.

Reference:

(1) Pannu, J., Asano, Y., Nakerakanti, S., et al. Smad1 pathway is activated in systemic sclerosis fibroblasts and is targeted by imatinib mesylate. *Arthritis Rheum.* 58 (8), 2528-2537 (2008)

For Research Use Only