



CENPA Antibody

E301348**Product description:**

Formulation: Lyophilized CENPA antibody purified by peptide affinity column containing 2% BSA and 0.02% NaN_3

Catalog No.: E301348

Size: 100ug/200ul

Source:

Rabbit polyclonal CENPA ⁽¹⁾ antibody was raised against a peptide from a peptide from the C terminal residues of human CENPA protein.

Species Reactivity:

Human

Not yet tested in other species.

Application:

For research use only

Peptide ELISA titer: 1:5,000-1:20,000

Western blot analysis: 1:200-1:1,000

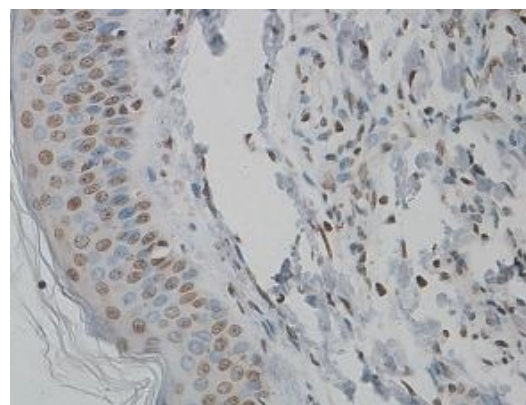
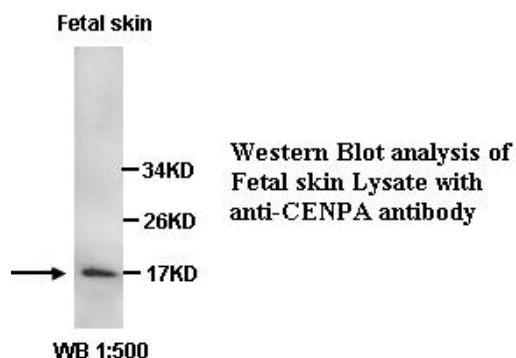
Immunohistochemistry: 1:100-500

Optimal dilutions/concentrations should be determined by the end user.

Dilution instruction and storage:

Already reconstituted in 200ul sterile H_2O . The antibody is stable for at least one year when stored at -20°C after reconstitution.

Avoid repeated freeze/defrost cycles.



Immunohistochemical staining of formalin-fixed paraffin-embedded skin showing nuclear staining with anti- CENPA antibody dilution: 1:100.

Reference:

(1) Zeitlin, S.G., Shelby, R.D. and Sullivan, K.F. CENP-A is phosphorylated by Aurora B kinase and plays an unexpected role in completion of cytokinesis. J. Cell Biol. 155 (7), 1147-1157 (2001)

For Research Use Only