



CCNB1 Antibody

E301349

Product description:

Formulation: Lyophilized rabbit anti-CCNB1 purified by peptide affinity column containing 2% BSA and 0.02% NaN₃

Catalog No.: E301349

Size: 100ug/200ul

Source:

Rabbit polyclonal CCNB1 ⁽¹⁾ antibody was raised against a peptide near the N terminal residues of human CCNB1.

Species Reactivity:

Human

Not yet tested in other species.

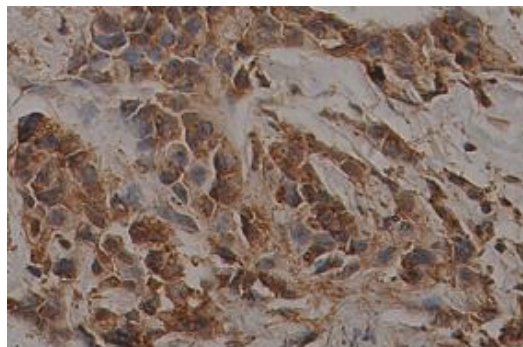
Application:

For research use only

Peptide ELISA titer: 1:5,000-1:20,000

Immunohistochemistry: 1:50-200

Optimal dilutions/concentrations should be determined by the end user.



Immunohistochemical staining of formalin-fixed paraffin-embedded breast carcinoma showing cytoplasmic and nuclear staining with anti-CCNB1 antibody at a dilution of 1/100.

Dilution instruction and storage:

Already reconstituted in 200ul sterile H₂O. The antibody is stable for at least one year when stored at -20°C after reconstitution.

Avoid repeated freeze/thaw cycles.

Reference:

(1) Qin,L., Tong,T., Song,Y.,et al. Aurora-A interacts with Cyclin B1 and enhances its stability. Cancer Lett. 275 (1), 77-85 (2009)

For Research Use Only