



cyclin A Antibody

E301352a

Product description:

Formulation: Lyophilized anti-cyclin A antibody purified by peptide affinity column containing 2% BSA and 0.02% NaN₃

Catalog No.: E301352a

Size: 100ug/200ul

Source:

Rabbit polyclonal cyclin A ⁽¹⁾ antibody was raised against a peptide from N terminal residues of human cyclin A protein.

Species Reactivity:

Human

Not yet tested in other species.

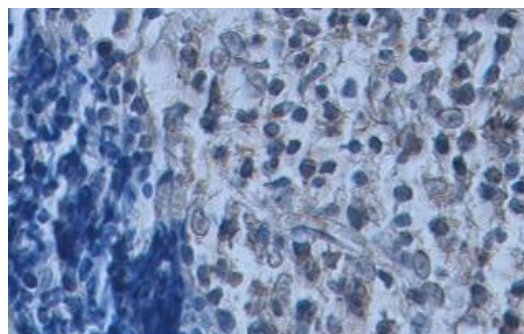
Application:

For research use only

Peptide ELISA titer: 1:1,000-1:10,000

Immunohistochemistry: 1:100-500

Optimal dilutions/concentrations should be determined by the end user.



Immunohistochemical staining of formalin-fixed paraffin-embedded tissue showing membrane and nuclear staining with anti-cyclin A antibody dilution: 1:100.

Dilution instruction and storage:

Already reconstituted in 200ul sterile H₂O. The antibody is stable for at least one year when stored at -20°C after reconstitution.

Avoid repeated freeze/thaw cycles.

Reference:

(1) Huang,H.Y., West,R.B., Tzeng,C.C., et al.Immunohistochemical and biogenetic features of diffuse-type tenosynovial giant cell tumors: the potential roles of cyclin A,P53, and deletion of 15q in sarcomatous transformation.Clin. Cancer Res. 14 (19), 6023-6032 (2008)

For Research Use Only