



cyclin A Antibody

E301352b

Product description:

Formulation: Lyophilized anti-cyclin A antibody purified by protein A column containing 0.02% NaN₃
Catalog No.: E301352b
Size: 200ul

Source:

Rabbit polyclonal cyclin A ⁽¹⁾ antibody was raised against a peptide from N terminal residues of human cyclin A protein.

Species Reactivity:

Human

Not yet tested in other species.

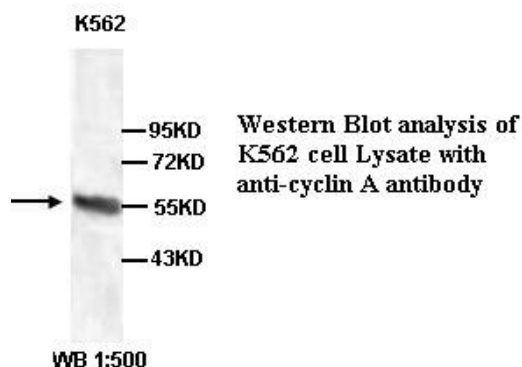
Application:

For research use only

Peptide ELISA titer: 1:1,000-1:10,000

Western blot analysis: 1:200-1:1,000

Optimal dilutions/concentrations should be determined by the end user.

**Dilution instruction and storage:**

Already reconstituted in 200ul sterile H₂O. The antibody is stable for at least one year when stored at -20°C after reconstitution.

Avoid repeated freeze/thaw cycle.

Reference:

(1) Huang,H.Y., West,R.B., Tzeng,C.C., et al.Immunohistochemical and biogenetic features of diffuse-type tenosynovial giant cell tumors: the potential roles of cyclin A,P53, and deletion of 15q in sarcomatous transformation.Clin. Cancer Res. 14 (19), 6023-6032 (2008)

s

For Research Use Only