



USF1 Antibody

E301457

Product description:

Formulation: Lyophilized anti-USF1 antibody purified by peptide affinity column containing 1% BSA and 0.02% NaN_3

Catalog No.:E301457

Size: 100ug/200ul

Source:

Rabbit polyclonal USF1 ⁽¹⁾ antibody was raised against a 15 amino acid peptide near the intermediate residues of human USF1 protein.

Species Reactivity:

Human, mus

Not yet tested in other species.

Application:

For research use only

Peptide ELISA titer: 1:40,000-1:80,000

Western blot analysis: 1:200-1:1,000

Immunohistochemistry: 1:50-200

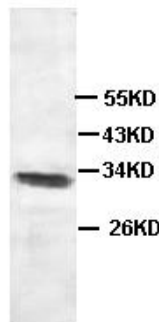
Optimal dilutions/concentrations should be determined by the end user.

Dilution instruction and storage:

Already reconstituted in 200ul sterile H_2O . The antibody is stable for at least one year when stored at -20°C after reconstitution.

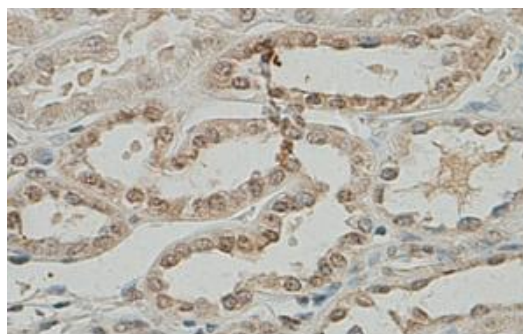
Avoid repeated freeze/thaw cycles.

Jurkat



WB 1:500

Western Blot analysis
of Jurkat cell Lysate
with anti-USF1 antibody



Immunohistochemical staining of formalin-fixed paraffin-embedded fetal kidney showing nuclear staining with anti-USF1 antibody at a dilution of 1/100.

Reference:

(1) van Vliet,J., Turner,J. and Crossley,M. Human Kruppel-like factor 8: a CACCC-box binding protein that associates with CtBP and represses transcription. Nucleic Acids Research.2000; 28(9):1955-1962.

For Research Use Only