



PSMC3 Antibody

E301472

Product description:

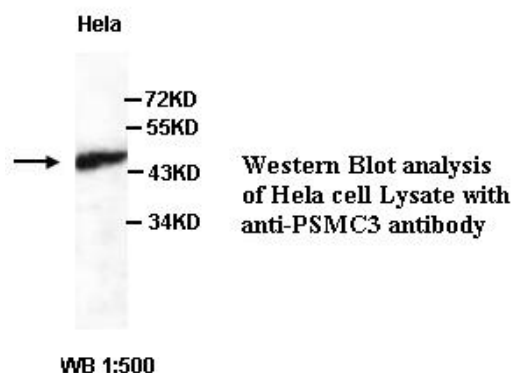
Formulation: Lyophilized PSMC3 antibody serum containing 0.02% NaN₃

Catalog No.: E301472

Size: 200ul

Source:

Rabbit polyclonal PSMC3⁽¹⁾ antibody was raised against a peptide from near the N terminal residues of human PSMC3



Species Reactivity:

Human, mus, rat

Not yet tested in other species.

Application:

For research use only

Peptide ELISA titer: 1:40,000-1:80,000

Western blot analysis: 1:200-1000

Optimal dilutions/concentrations should be determined by the end user.

Dilution instruction and storage:

Already reconstituted in 200ul sterile H₂O. The antibody is stable for at least one year when stored at -20°C after reconstitution.

Avoid repeated freeze/thaw cycles.

Reference:

(1) Tu, L.C., Yan, X., Hood, L. and Lin, B.. Proteomics analysis of the interactome of N-myc downstream regulated gene 1 and its interactions with the androgen response program in prostate cancer cells. Mol. Cell Proteomics 6 (4), 575-588 (2007)

For Research Use Only