



PSMC3 Antibody

E301472a

Product description:

Formulation: Lyophilized rabbit anti-PSMC3 purified by peptide affinity column containing 2% BSA and 0.02% NaN₃

Catalog No.: E301472a

Size: 100ug/200ul

Source:

Rabbit polyclonal PSMC3 ⁽¹⁾ antibody was raised against a peptide from near the N terminal residues of human PSMC3

Species Reactivity:

Human,mus,rat

Not yet tested in other species.

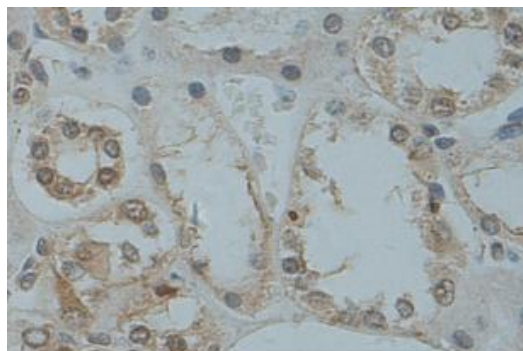
Application:

For research use only

Peptide ELISA titer: 1:40,000-1:80,000

Immunohistochemistry: 1:50-200

Optimal dilutions/concentrations should be determined by the end user.



Immunohistochemical staining of formalin-fixed paraffin-embedded fetal kidney showing cytoplasmic and nuclear staining with anti-PSMC3 antibody at a dilution of 1/100.

Dilution instruction and storage:

Already reconstituted in 200ul sterile H₂O. The antibody is stable for at least one year when stored at -20°C after reconstitution.

Avoid repeated freeze/thaw cycles.

Reference:

(1) Tu,L.C., Yan,X., Hood,L. and Lin,B..Proteomics analysis of the interactome of N-myc downstream regulated gene 1 and its interactions with the androgen response program in prostate cancer cells. Mol. Cell Proteomics 6 (4), 575-588 (2007)

For Research Use Only