



## ABHD15 Antibody

E301602

### Product description:

Formulation: Lyophilized anti-ABHD15 antibody purified by peptide affinity column containing 1% BSA and 0.02% NaN<sub>3</sub>

Catalog No.: E301602

Size: 100ug/200ul

### Source:

Rabbit polyclonal ABHD15<sup>(1)</sup> antibody was raised against a peptide from C terminal residues of human ABHD15 protein.

### Species Reactivity:

Human, Mus

Not yet tested in other species.

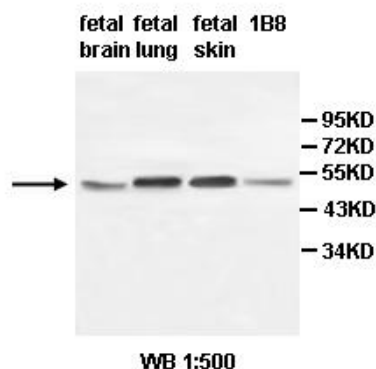
### Application:

For research use only

Peptide ELISA titer: 1:5,000-1:10,000

Western blot analysis: 1:500-1:1,000

Optimal dilutions/concentrations should be determined by the end user.



### Dilution instruction and storage:

Already reconstituted in 200ul sterile H<sub>2</sub>O. The antibody is stable for at least one year when stored at -20°C after reconstitution.

Avoid repeated freeze/defrost cycles.

### Reference:

(1) Clark,H.F., Gurney,A.L., Abaya,E., et al. The secreted protein discovery initiative (SPDI), a large-scale effort to identify novel human secreted and transmembrane proteins: a bioinformatics assessment. Genome Res. 13 (10), 2265-2270 (2003)

**For Research Use Only**