



## AHI1 Antibody

E301614

**Product description:**

Formulation: Lyophilized anti-AHI1 antibody purified by peptide affinity column containing 1% BSA and 0.02% NaN<sub>3</sub>

Catalog No.: E301614

Size: 100ug/200ul

**Source:**

Rabbit polyclonal AHI1<sup>(1)</sup> antibody was raised against a peptide from N terminal residues of human AHI1 protein.

**Species Reactivity:**

Human

Not yet tested in other species.

**Application:**

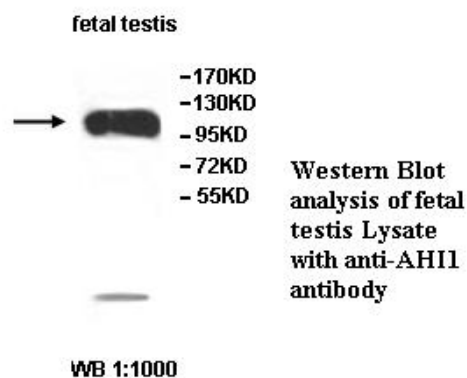
For research use only

Peptide ELISA titer: 1:10,000-1:40,000

Western blot analysis: 1:1,000-1:2,000

Immunohistochemistry: 1:100-1:500

Optimal dilutions/concentrations should be determined by the end user.

**Dilution instruction and storage:**

Already reconstituted in 200ul sterile H<sub>2</sub>O. The antibody is stable for at least one year when stored at -20°C after reconstitution.

Avoid repeated freeze/thaw cycles.

**Reference:**

(1) Otto, E.A., Ramaswami, G., Janssen, S., et al. Mutation analysis of 18 nephronophthisis associated ciliopathy disease genes using a DNA pooling and next generation sequencing strategy. J. Med. Genet. 48 (2), 105-116 (2011)

**For Research Use Only**