



## AIF1 Antibody

E301619

**Product description:**

Formulation: Lyophilized anti-AIF1 antibody purified by peptide affinity column containing 1% BSA and 0.02%  $\text{NaN}_3$

Catalog No.: E301619

Size: 100ug/200ul

**Source:**

Rabbit polyclonal AIF1<sup>(1)</sup> antibody was raised against a peptide from C terminal residues of human AIF1 protein.

**Species Reactivity:**

Human, Rattus, Mus

Not yet tested in other species.

**Application:**

For research use only

Peptide ELISA titer: 1:10,000-1:40,000

Western blot analysis: 1:500-1:1,000

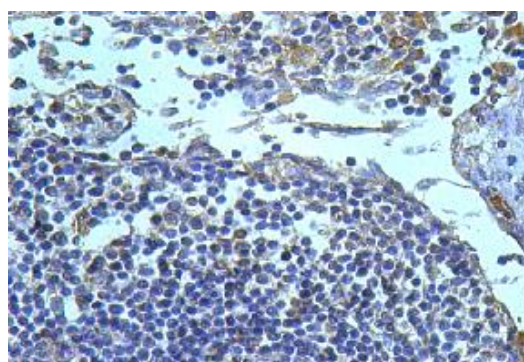
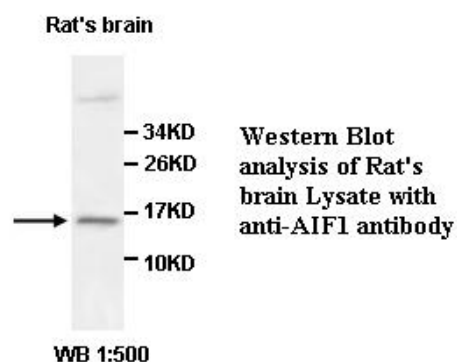
Immunohistochemistry: 1:100-1:500

Optimal dilutions/concentrations should be determined by the end user.

**Dilution instruction and storage:**

Already reconstituted in 200ul sterile  $\text{H}_2\text{O}$ . The antibody is stable for at least one year when stored at  $-20^\circ\text{C}$  after reconstitution.

Avoid repeated freeze/thaw cycles.



Immunohistochemical staining of formalin-fixed paraffin-embedded fetal lymphocytes showing cytoplasmic staining with anti-AIF1 antibody at a dilution of 1/100.

**Reference:**

(1) Kelly, J.L., Novak, A.J., Fredericksen, Z.S., et al. Germline variation in apoptosis pathway genes and risk of non-Hodgkin's lymphoma. Cancer Epidemiol. Biomarkers Prev. 19 (11), 2847-2858 (2010)

**For Research Use Only**