



AIFM2 Antibody

E301620

Product description:

Formulation: Lyophilized anti-AIFM2 antibody purified by peptide affinity column containing 1% BSA and 0.02% NaN₃

Catalog No.: E301620

Size: 100ug/200ul

Source:

Rabbit polyclonal AIFM2 ⁽¹⁾ antibody was raised against a peptide from intermediate residues of human AIFM2 protein.

Species Reactivity:

Human, Rattus, Mus

Not yet tested in other species.

Application:

For research use only

Peptide ELISA titer: 1:10,000-1:40,000

Western blot analysis: 1:500-1:1,000

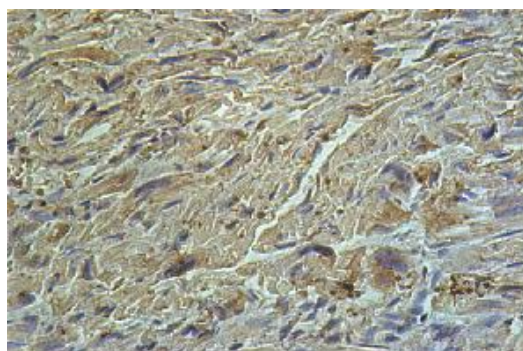
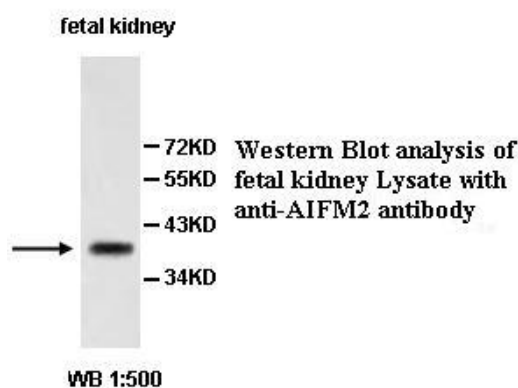
Immunohistochemistry: 1:100-1:500

Optimal dilutions/concentrations should be determined by the end user.

Dilution instruction and storage:

Already reconstituted in 200ul sterile H₂O. The antibody is stable for at least one year when stored at -20°C after reconstitution.

Avoid repeated freeze/thaw cycles.



Immunohistochemical staining of formalin-fixed paraffin-embedded fetal heart showing cytoplasmic staining with anti-AIFM2 antibody at a dilution of 1/100.

Reference:

(1) Notaridou,M., Quaye,L., Dafou,D., et al. Common alleles in candidate susceptibility genes associated with risk and development of epithelial ovarian cancer. Int. J. Cancer 128 (9), 2063-2074 (2011)

For Research Use Only