



AIM1L Antibody

E301622

Product description:

Formulation: Lyophilized anti-AIM1L antibody purified by peptide affinity column containing 1% BSA and 0.02% NaN_3

Catalog No.: E301622

Size: 100ug/200ul

Source:

Rabbit polyclonal AIM1L ⁽¹⁾ antibody was raised against a peptide from N terminal residues of human AIM1L protein.

Species Reactivity:

Human

Not yet tested in other species.

Application:

For research use only

Peptide ELISA titer: 1:10,000-1:40,000

Western blot analysis: 1:1,000-1:2,000

Immunohistochemistry: 1:100-1:500

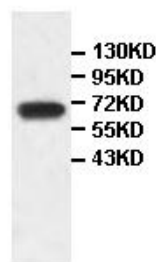
Optimal dilutions/concentrations should be determined by the end user.

Dilution instruction and storage:

Already reconstituted in 200ul sterile H_2O . The antibody is stable for at least one year when stored at -20°C after reconstitution.

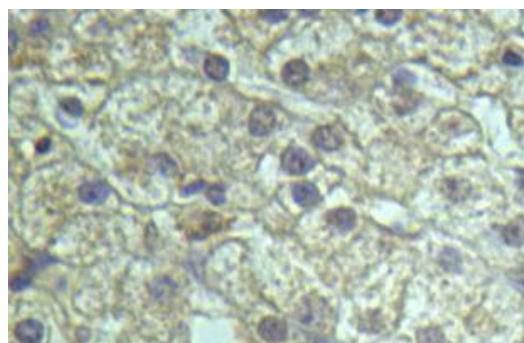
Avoid repeated freeze/thaw cycles.

fetal liver



Western Blot analysis of fetal liver Lysate with anti-AIM1L antibody

WB 1:1000



Immunohistochemical staining of formalin-fixed paraffin-embedded fetal liver staining with anti-AIM1L antibody at a dilution of 1/100.

Reference:

(1) Szafranski, K., Schindler, S., Taudien, S., et al. Violating the splicing rules: TG dinucleotides function as alternative 3' splice sites in U2-dependent introns. *Genome Biol.* 8 (8), R154 (2007)

For Research Use Only