



## ABCD2 Antibody

E301625

### Product description:

Formulation: Lyophilized anti-ABCD2 antibody purified by peptide affinity column containing 1% BSA and 0.02%  $\text{NaN}_3$

Catalog No.: E301625

Size: 100ug/200ul

### Source:

Rabbit polyclonal ABCD2 <sup>(1)</sup> antibody was raised against a peptide from C terminal residues of human ABCD2 protein.

### Species Reactivity:

Human

Not yet tested in other species.

### Application:

For research use only

Peptide ELISA titer: 1:10,000-1:40,000

Western blot analysis: 1:500-1:1,000

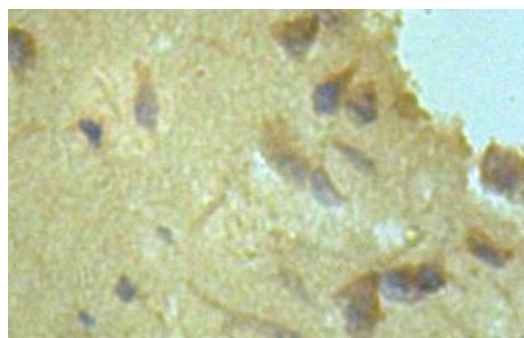
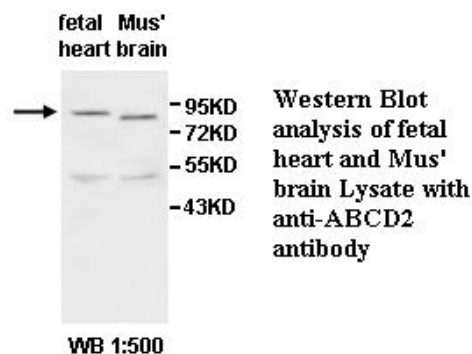
Immunohistochemistry: 1:100-1:500

Optimal dilutions/concentrations should be determined by the end user.

### Dilution instruction and storage:

Already reconstituted in 200ul sterile  $\text{H}_2\text{O}$ . The antibody is stable for at least one year when stored at  $-20^\circ\text{C}$  after reconstitution.

Avoid repeated freeze/thaw cycles.



Immunohistochemical staining of formalin-fixed paraffin-embedded fetal brain showing cytoplasmic staining with anti-ABCD2 antibody at a dilution of 1/100.

### Reference:

(1) Matsukawa, T., Asheuer, M., Takahashi, Y., et al. Identification of novel SNPs of ABCD1, ABCD2, ABCD3, and ABCD4 genes in patients with X-linked adrenoleukodystrophy (ALD) based on comprehensive resequencing and association studies with ALD phenotypes. *Neurogenetics* 12 (1), 41-50 (2011)

**For Research Use Only**