



## FOXA1 Antibody

E301718

**Product description:**

Formulation: Lyophilized rabbit anti-FOXA1 antibody purified by peptide affinity column containing 1% BSA and 0.02% NaN<sub>3</sub>

Catalog No.: E301718

Size: 200ul

**Source:**

Rabbit polyclonal FOXA1<sup>(1)</sup> antibody was raised against a peptide from the C terminal residues of human FOXA1.

**Species Reactivity:**

Reacts with: Human

Predicted: mus, rat

Not yet tested in other species.

**Application:**

For research use only

ELISA titer: 1:20,000-1:80,000

Western blot analysis: 1:500-1:1,000

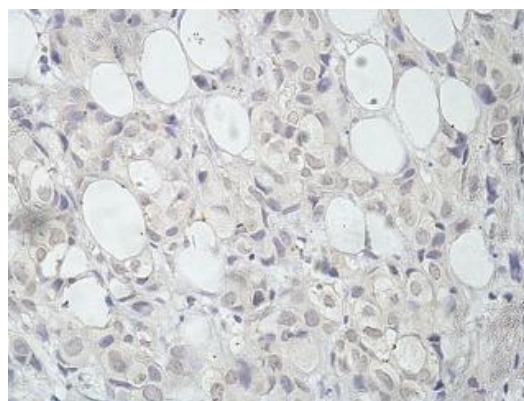
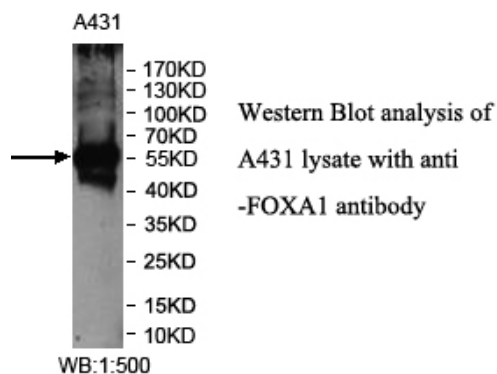
Immunohistochemistry: 1:100-1:500

Optimal dilutions/concentrations should be determined by the end user.

**Dilution instruction and storage:**

Already reconstituted in 200ul sterile H<sub>2</sub>O. The antibody is stable for at least one year when stored at -20°C after reconstitution.

Avoid repeated freeze/thaw cycles.



Immunohistochemical staining of formalin-fixed paraffin-embedded breast carcinoma showing nucleus staining with anti-FOXA1 antibody at a dilution of 1/100

**Reference:**

(1) Hansel, N.N., Ruczinski, I., Rafaels, N., et al. Genome-wide study identifies two loci associated with lung function decline in mild to moderate COPD. Hum. Genet. 132 (1), 79-90 (2013)

**For Research Use Only**