



## E2F1 Antibody

E305022

**Product description:**

Formulation: Lyophilized E2F1 antibody purified by protein A column containing 0.02% NaN<sub>3</sub>

Catalog No.: E305022

Size: 100ug

Antigen GeneBank No.: NM\_005225

**Source:**

Rabbit polyclonal E2F1<sup>(1)</sup> antibody was raised against a recombinant human E2F1 protein 183-433aa (NM\_005225).

**Species Reactivity:**

Reacts with: Human

Predicted: mus, rat

Not yet tested in other species.

**Application:**

For research use only

ELISA titer: 1:20,000-1:80,000

Western blot analysis: 1:500-1:1,000

Immunohistochemistry: 1:50-200

Optimal dilutions/concentrations should be determined by the end use

**Dilution instruction and storage:**

Reconstitute in 200ul sterile H<sub>2</sub>O.

The lyophilized antibody is stable for at least one year when stored at -20°C after reconstitution.

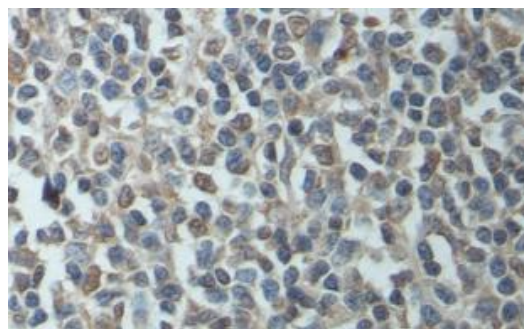
Avoid repeated freeze/thaw cycles.

K562



WB 1:500

Western Blot analysis of K562 cell Lysate with anti-E2F1 antibody



Immunohistochemical staining of formalin-fixed paraffin-embedded fetal tonsil showing nuclear staining with anti-E2F1 antibody at a dilution of 1/100.

**Reference:**

- (1) Paik, J.C., Wang, B., Liu, K., et al. Regulation of E2F1-induced apoptosis by the nucleolar protein RRP1B. J. Biol. Chem. 285 (9), 6348-6363 (2010)

**For Research Use Only**